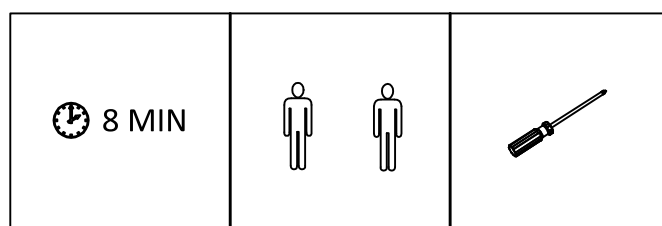
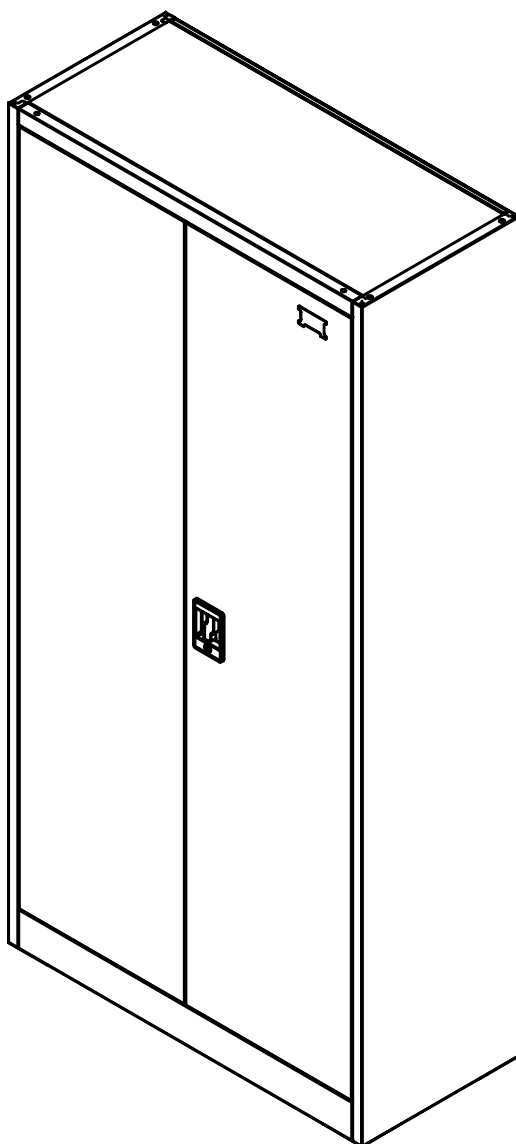
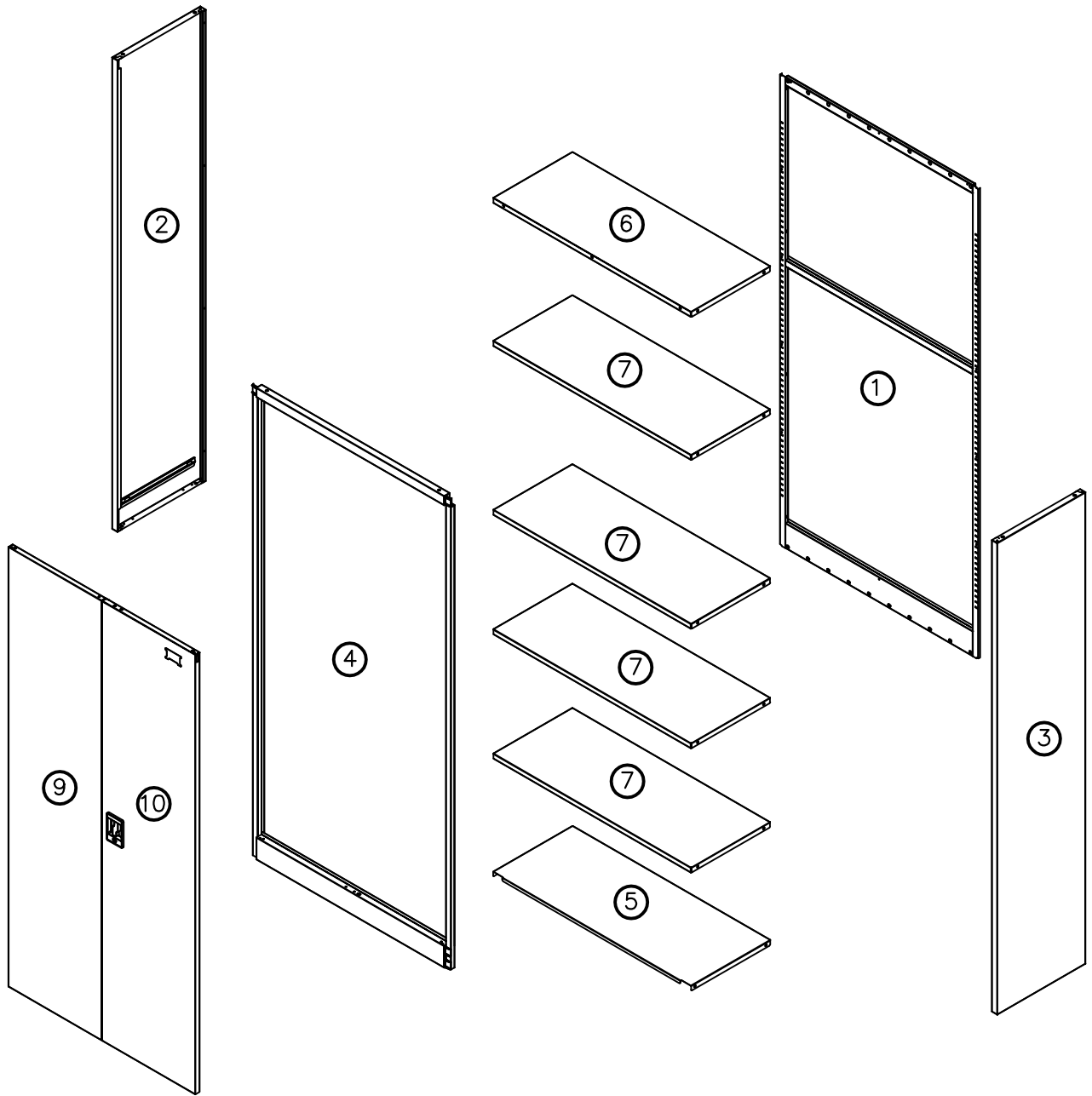

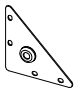
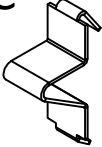
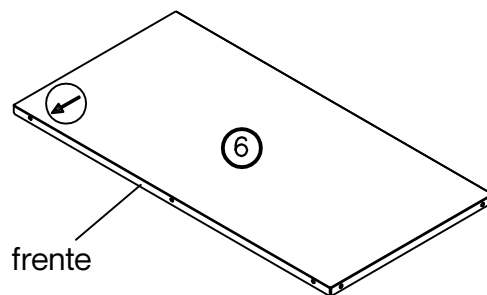
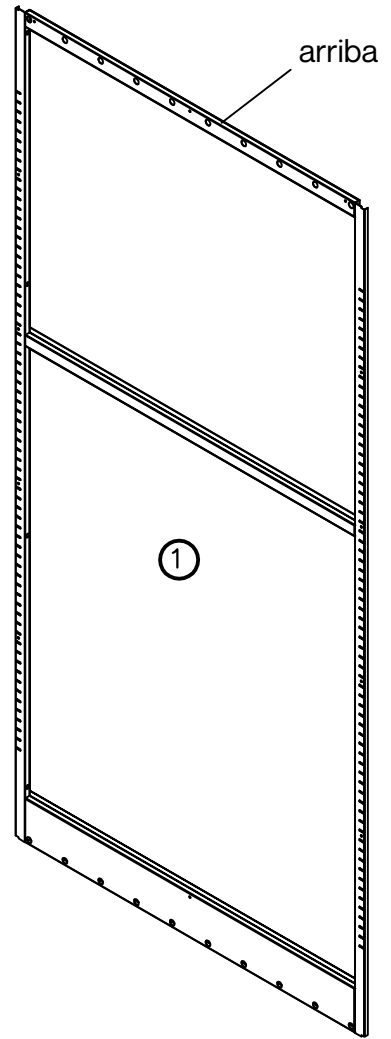
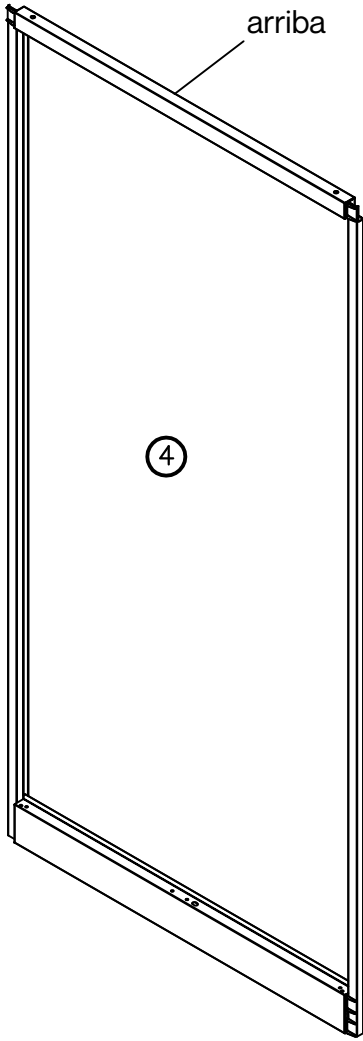


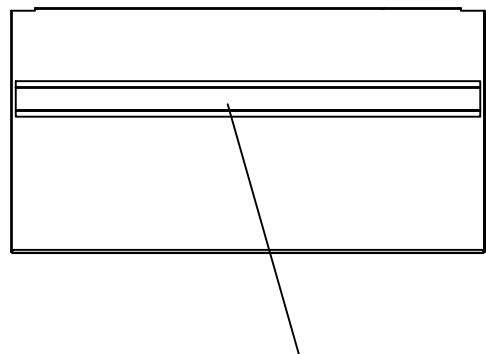
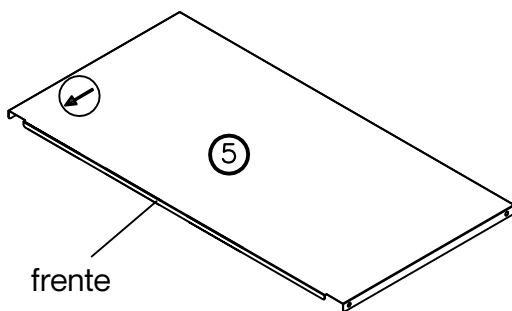
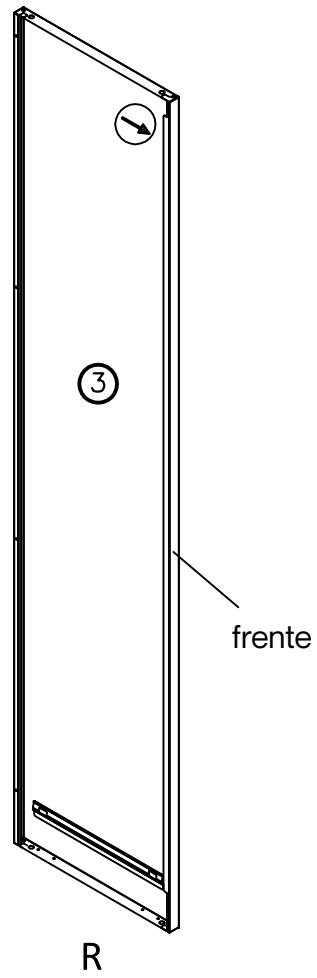
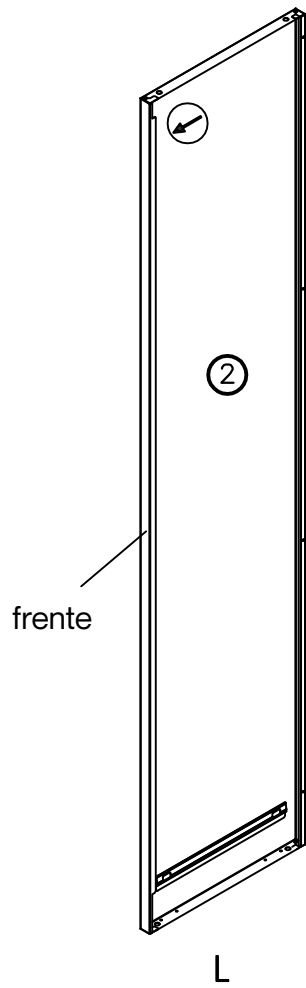
# Instrucciones de armado





<p><b>A</b> M5x12mm</p>  <p>x31</p>	<p><b>B</b></p>  <p>x4</p>	<p><b>C</b></p>  <p>x16</p>
--	---	--

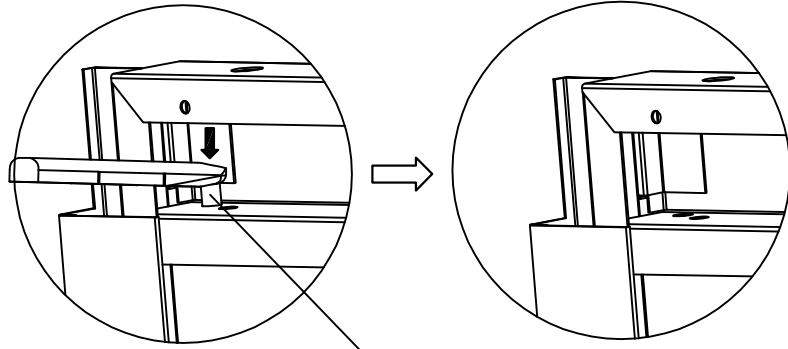




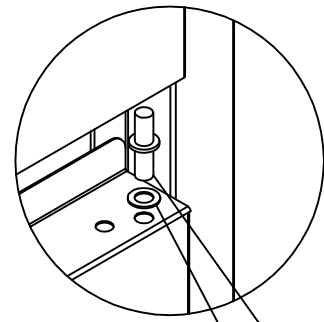
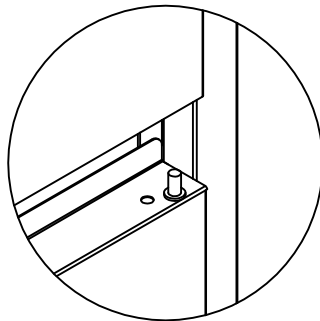
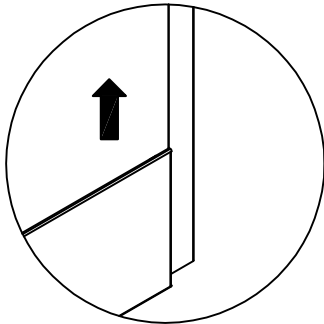
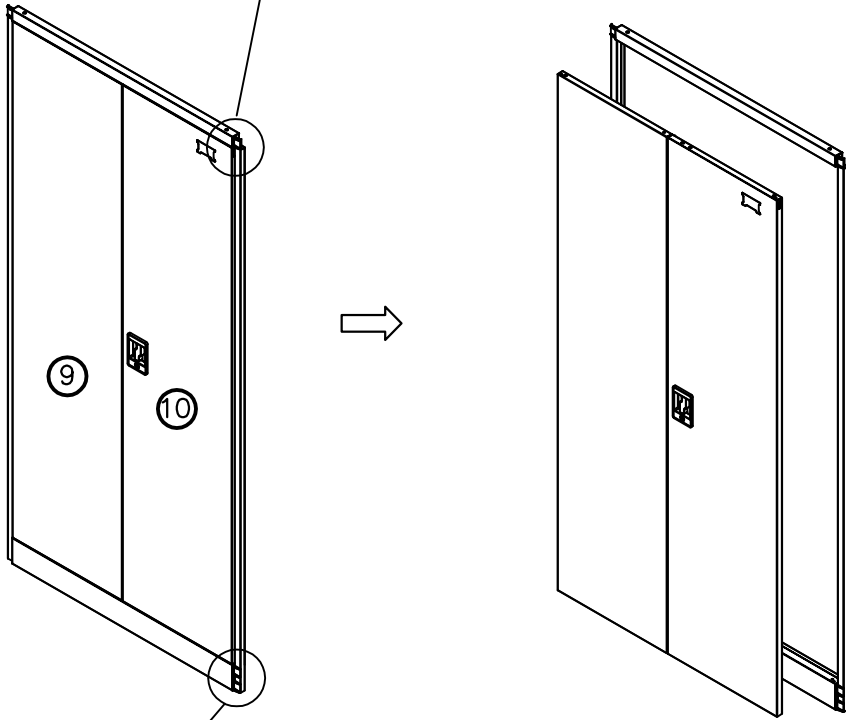
La posición del refuerzo del tabique es correcta para facilitar el embalaje y reducir el volumen.

# 1

Paso 1: Quitar la parte de arriba



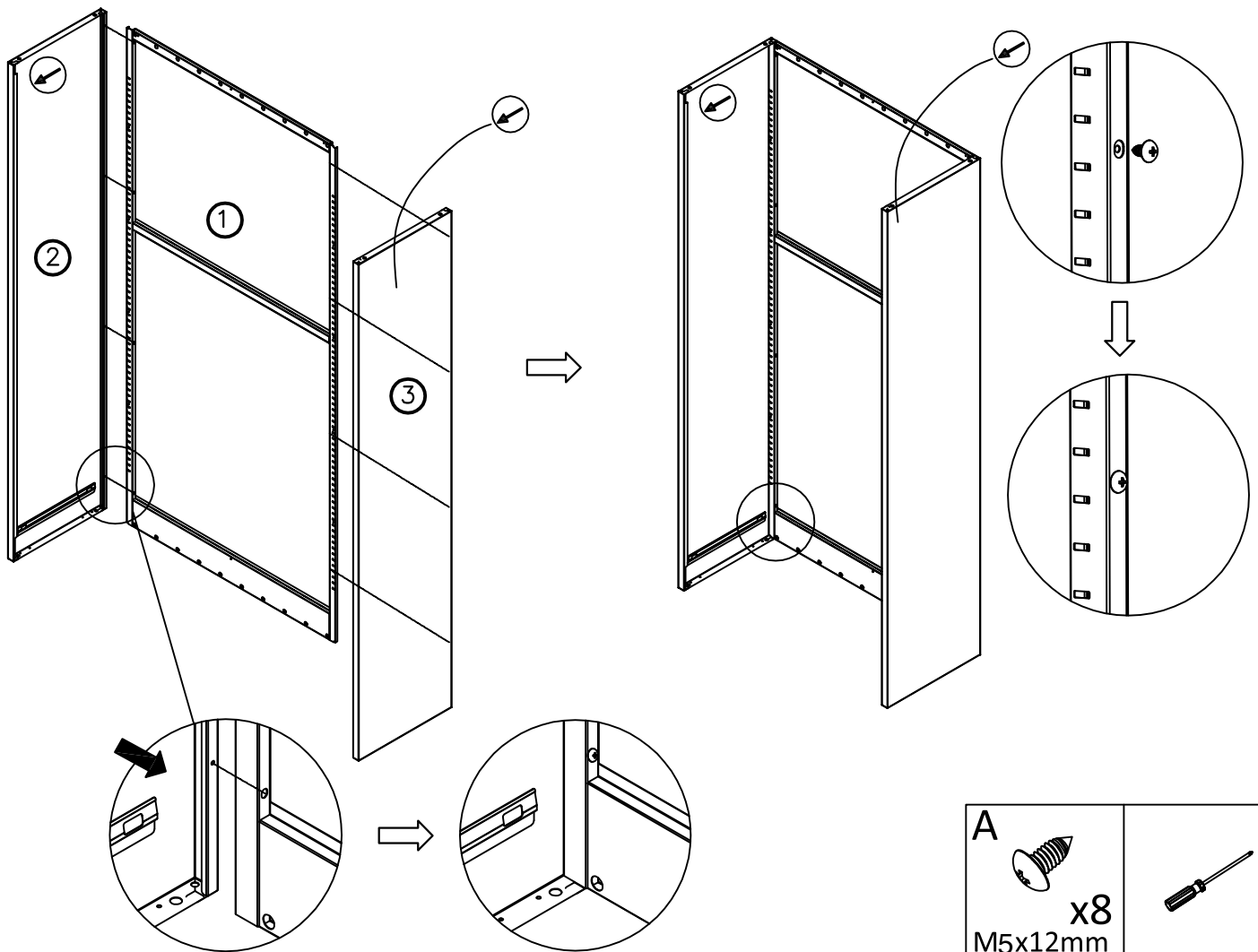
Presionar con el dedo hacia arriba



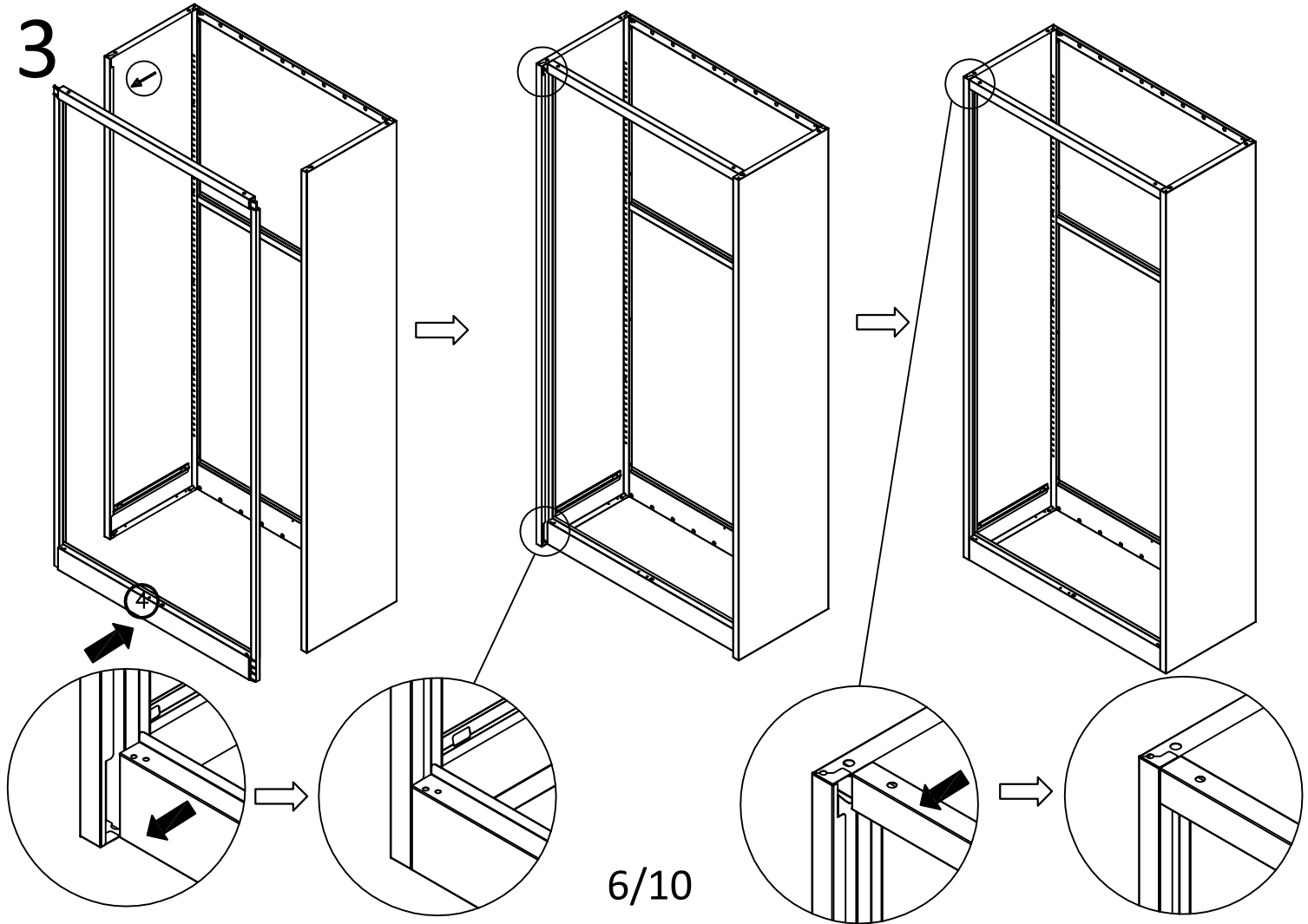
Paso 2: Quitar la parte de arriba

Tener cuidado de no perder

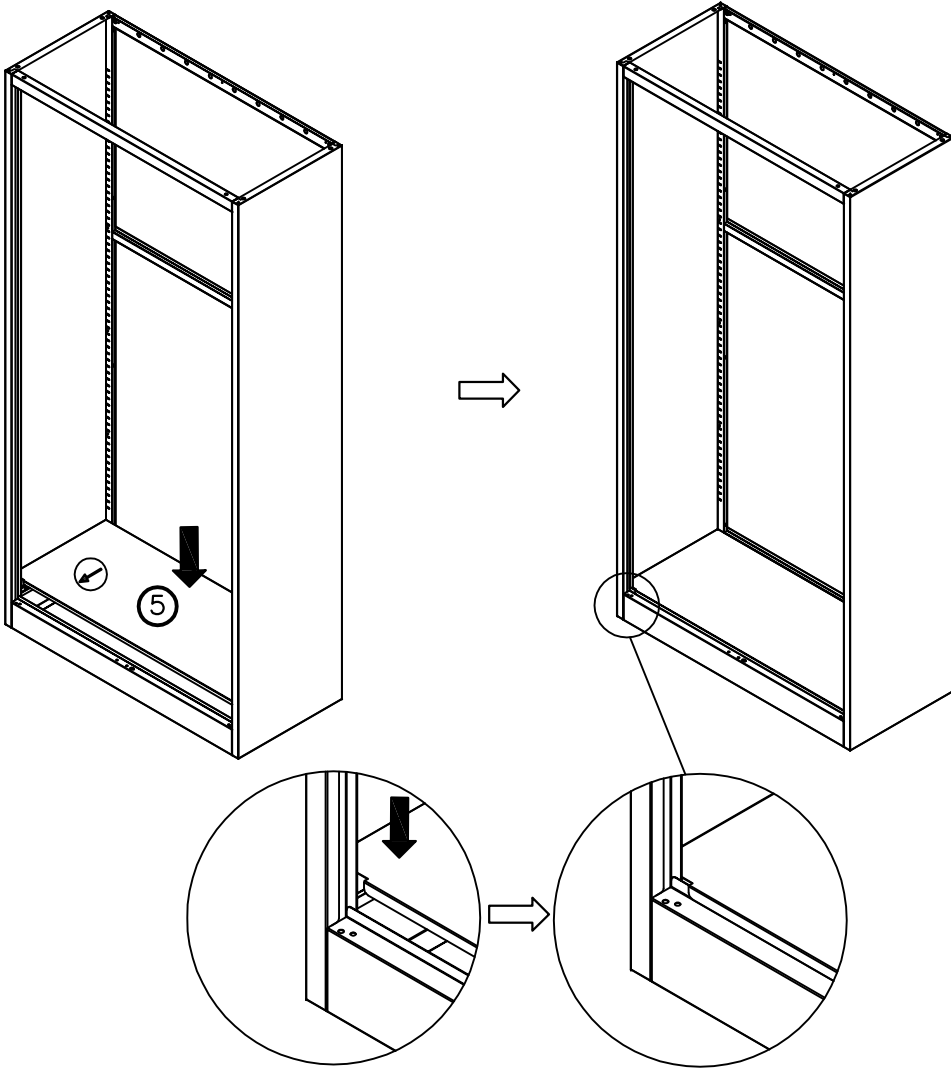
2



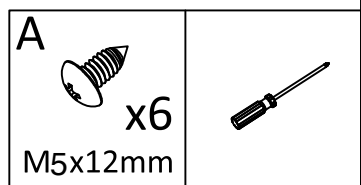
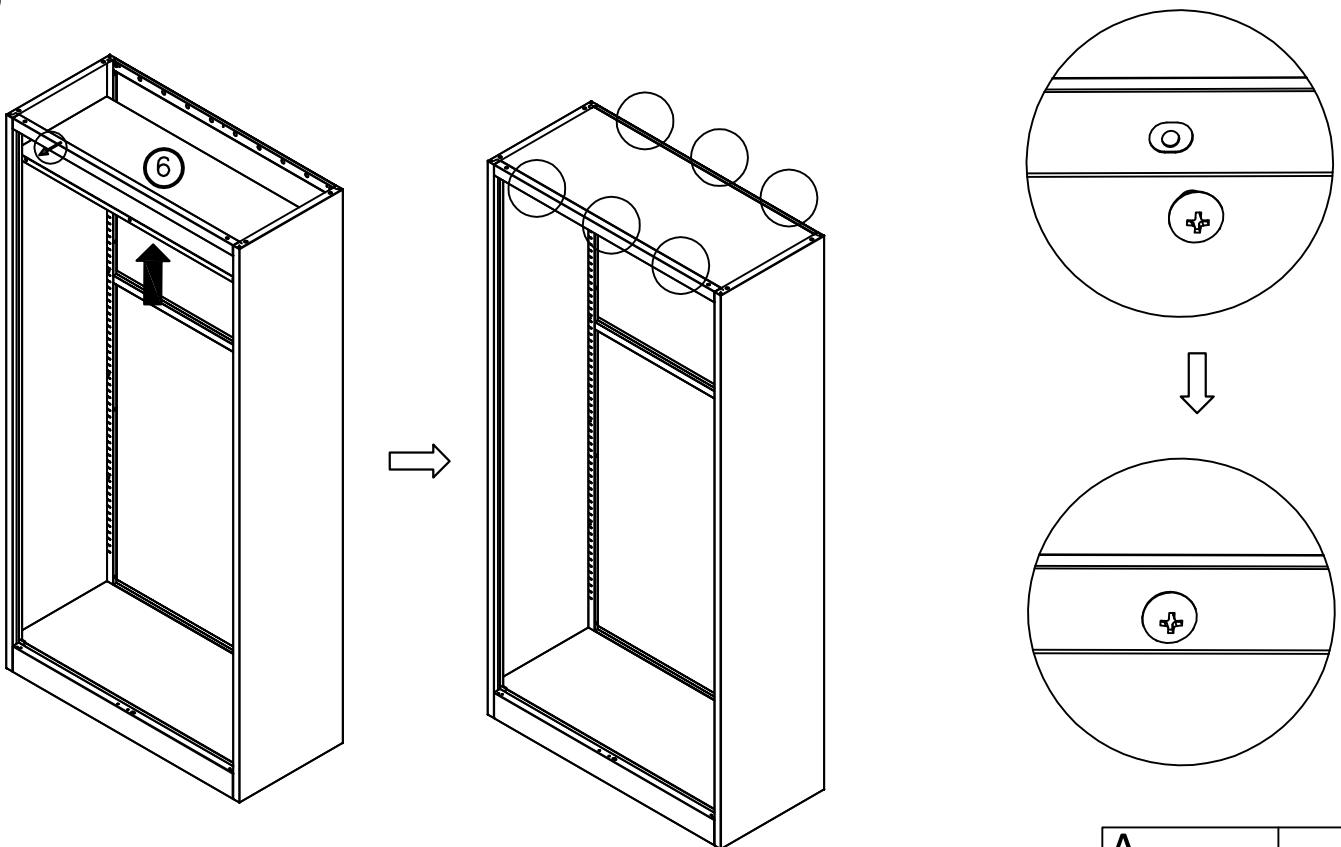
3



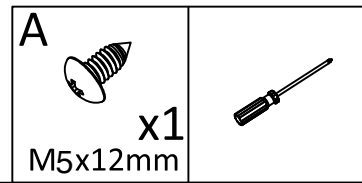
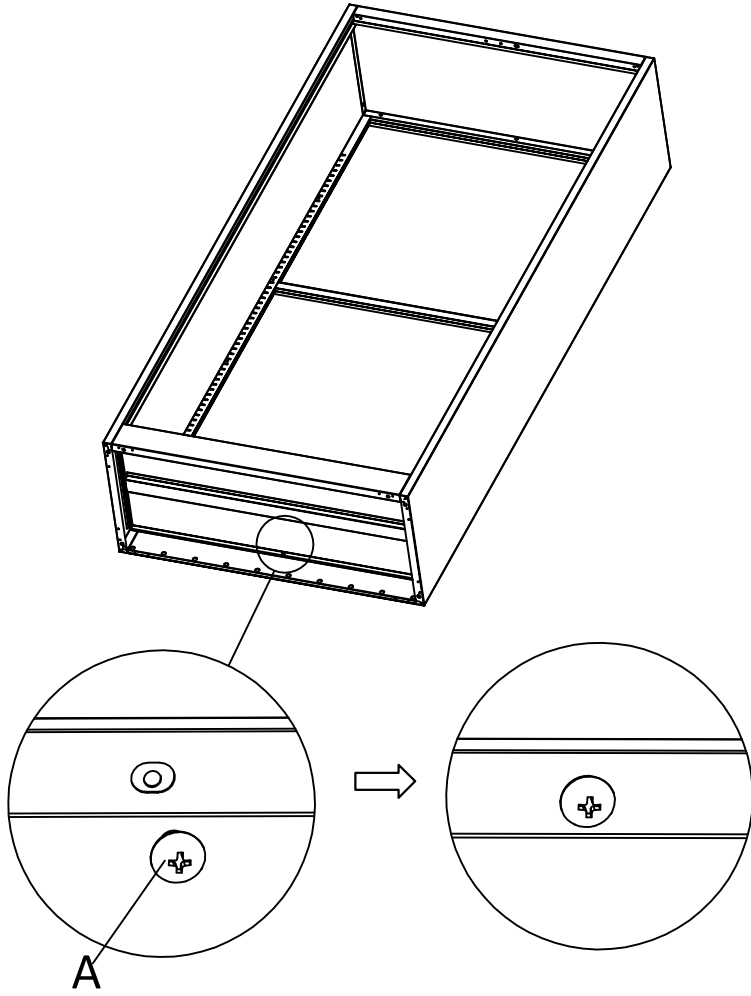
4



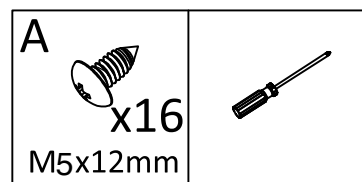
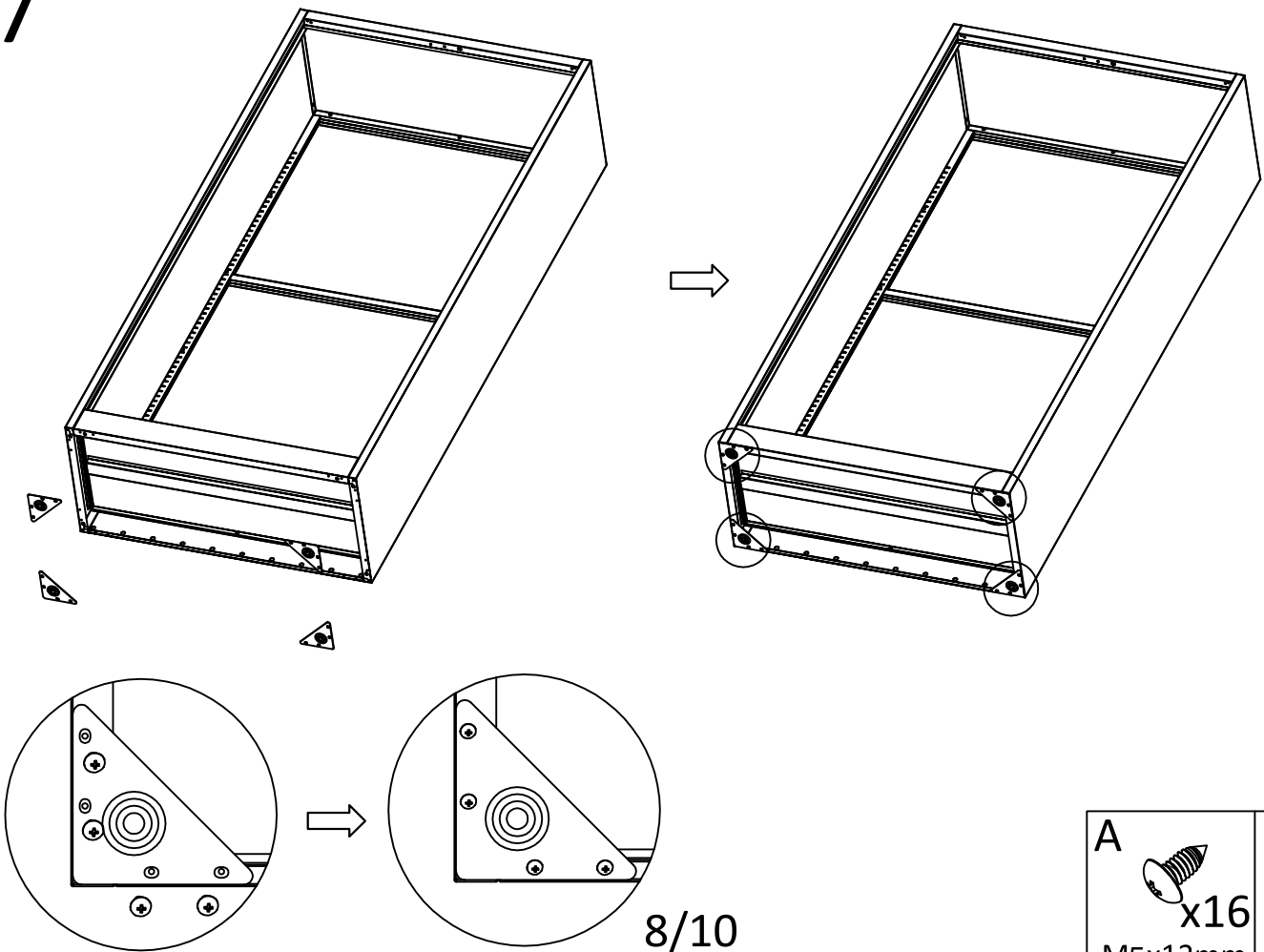
5



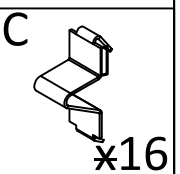
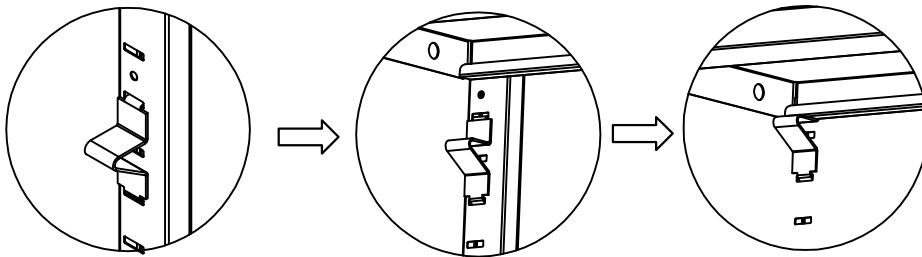
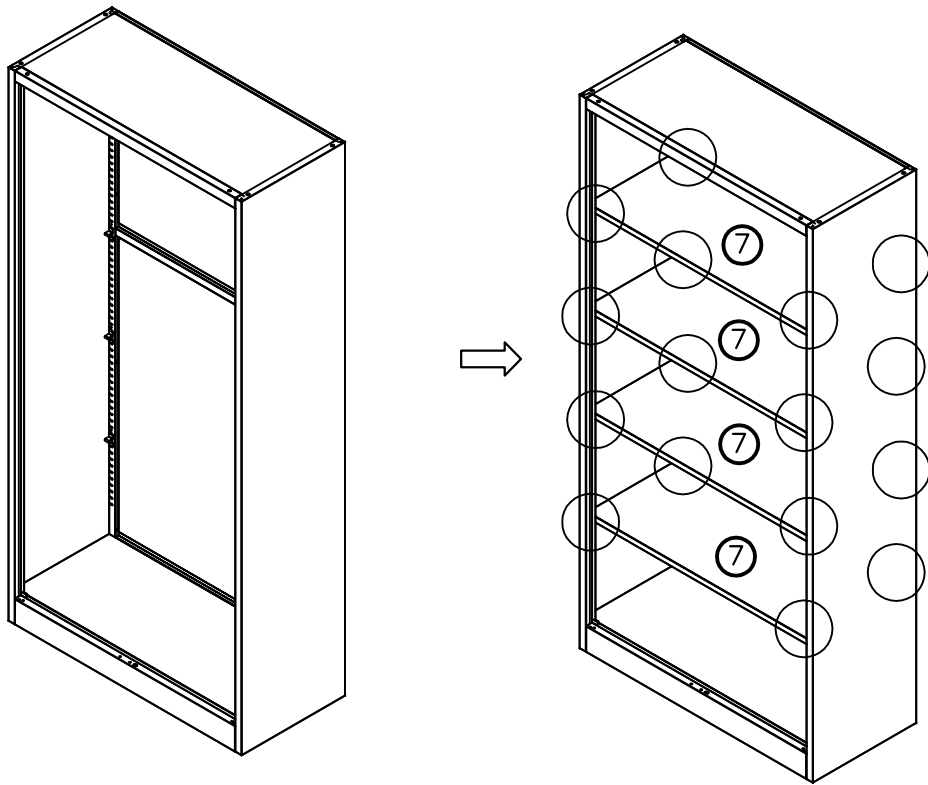
6



7

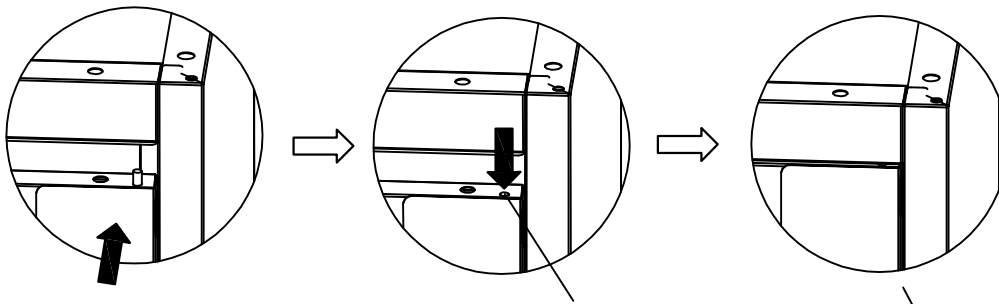




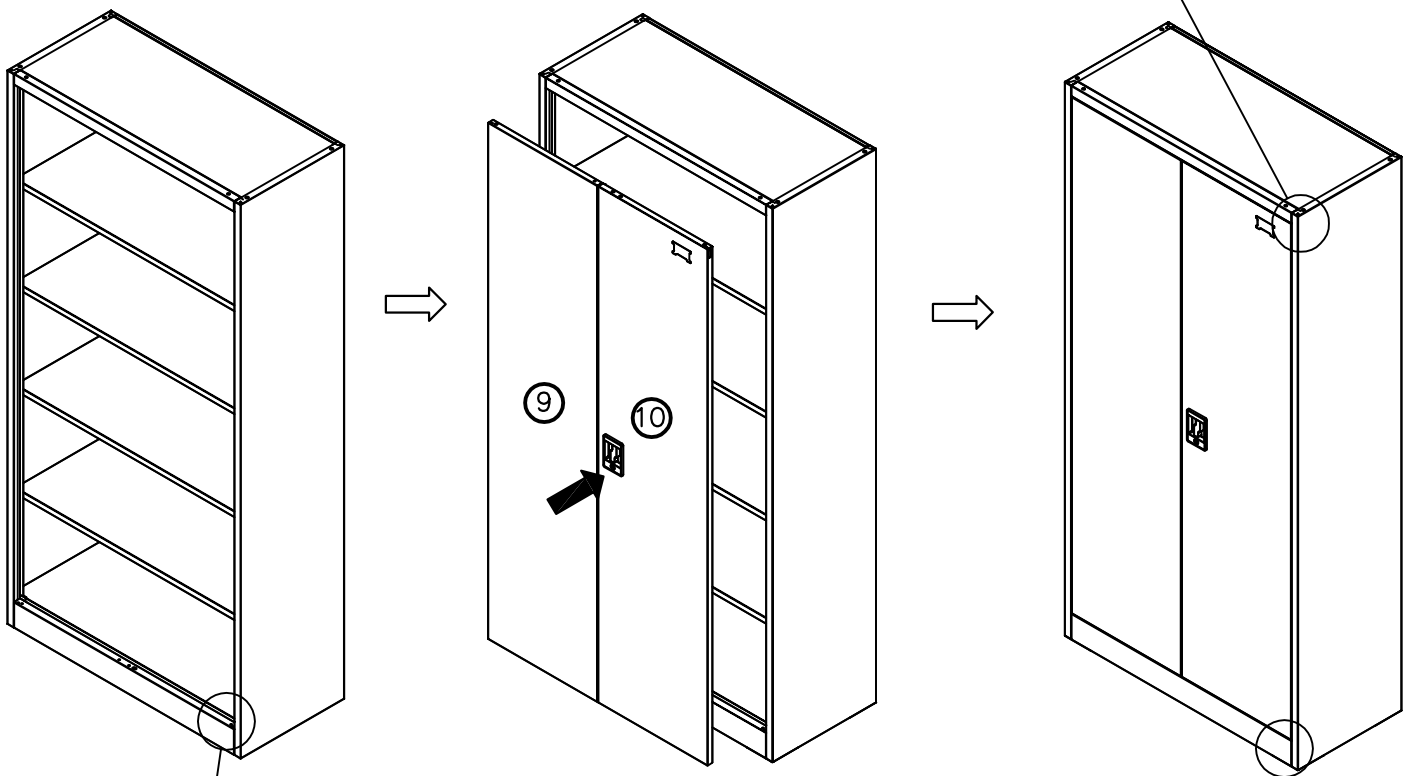


9

Paso 2: Instalar la parte superior nuevamente



Presione hacia abajo y empuje hacia adentro



Paso 1: Instalar lo siguiente

